



INDOFINE Chemical Company, Inc.

121 Stryker Lane, Bldg. 30, Suite 1 • Hillsborough, NJ 08844 • U.S.A.

Phone: (908) 359-6778 • FAX: (908) 359-1179

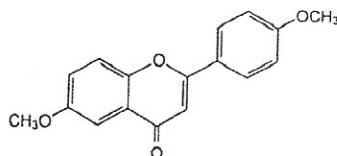
website: www.indofinechemical.com

e-mail: chemical@indofinechemical.com

CERTIFICATE OF ANALYSIS

Cat. No.: D-265

<u>Product:</u>	6,4'-DIMETHOXYFLAVONE
<u>Lot No.:</u>	4DMF389
<u>Molecular Formula:</u>	C ₁₇ H ₁₄ O ₄
<u>M.W.:</u>	282.30
<u>Melting Point:</u>	194-195°C
<u>Appearance:</u>	Off white powder
<u>Solubility:</u>	Soluble in chloroform
<u>TLC:</u>	Chloroform : methanol (9:1)
<u>Purity (HPLC):</u>	99.51%





INDOFINE Chemical Company, Inc.

121 Stryker Lane, Bldg. 30, Suite 1 • Hillsborough, NJ 08844 • U.S.A.

Phone: (908) 359-6778 • FAX: (908) 359-1179

website: www.indofinechemical.com

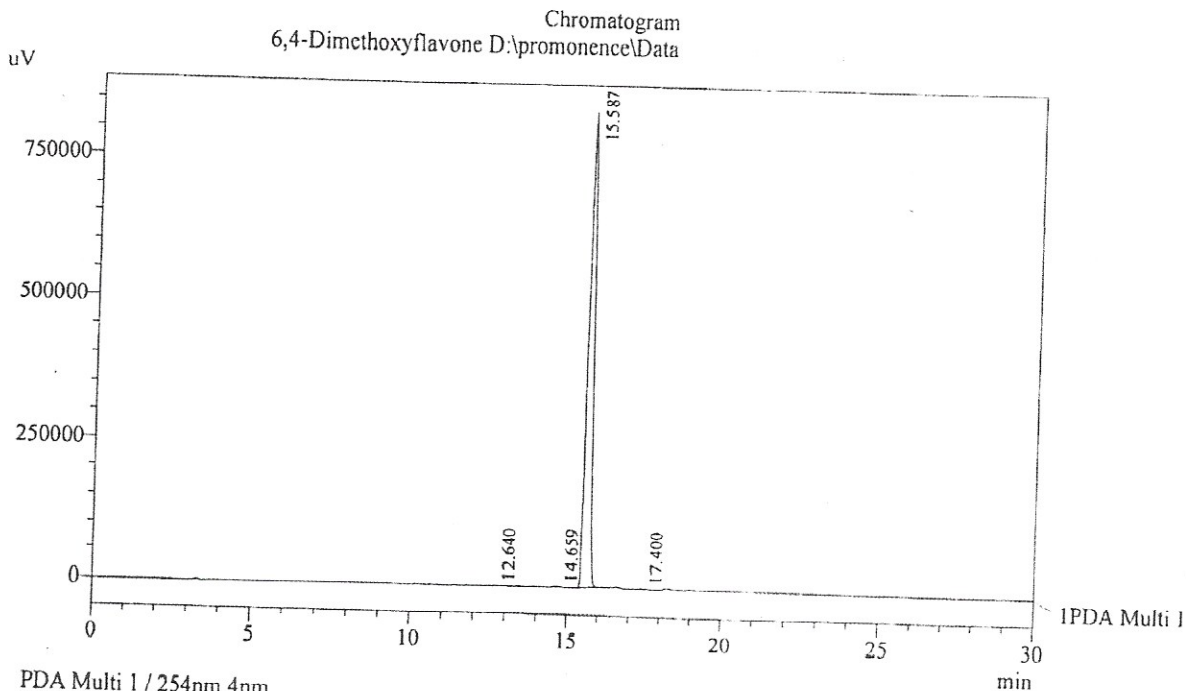
e-mail: chemical@indofinechemical.com

HPLC ANALYSIS

Acquired by : Sanjeev
Sample Name : 6,4-Dimethoxyflavone
Sample ID : Lot No:- 4DMF389
Injection Volume : 20 uL
Data Filename : 110112N.lcd
Method Filename : Linear Gradient.M.lcm

Catalog No.: D-265
Product name: 6,4'-Dimethoxyflavone
Lot No.: 4DMF389

Date Acquired : 1/11/2012 7:36:46 PM
Data Processed : 1/11/2012 8:12:06 PM
Column : LUNA C-18(2), (250mm x4.6mm 5.0µ)
Flow : 1.000 mL/min.
Mobile Phase : A(0.05% TFA in water) B(Acetonitrile)
0.01 90 10
12.0 10 90
25.0 10 90
28.0 90 10
30.0 90 10



Peak Table

Peak#	Name	Ret. Time	Area	Area %	Relative Retention Time
1	RT:12.640	12.640	7966	0.08	0.81
2	RT:14.659	14.659	31287	0.30	0.94
3	RT:15.587	15.587	10366588	99.51	1.00
4	RT:17.400	17.400	11783	0.11	1.12
Total			10417624	100.00	

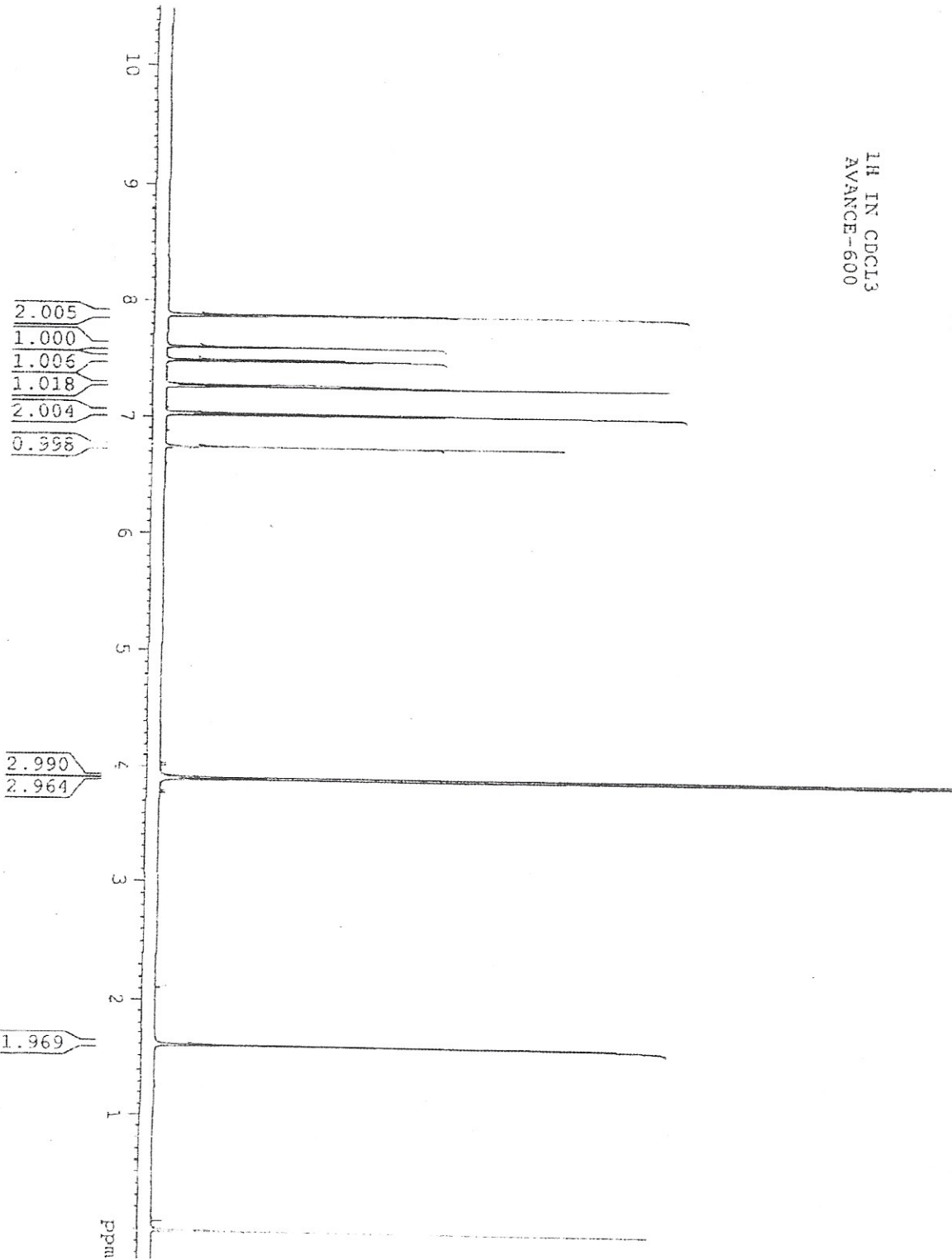
PDA Ch1 254nm 4nm



INDOFINE Chemical Company, Inc.
121 STRYKER LANE
BLDG. 30, SUITE 1
HILLSBOROUGH, NJ 08844

Catalog No.: D-265
Product name: 6,4'-Dimethoxyflavone
Lot No.: 4DMF389

¹H IN CDCl₃
AVANCE-600





INDOFINE Chemical Company, Inc.
121 STRYKER LANE
BLDG. 30, SUITE 1
HILLSBOROUGH, NJ 08844

Catalog No.: D-265
Product name: 6,4'-Dimethoxyflavone
Lot No.: 4DMF389

